



# NEZUL BE HUNUYEH CHILD & FAMILY SERVICES SOCIETY

Annual General Assembly

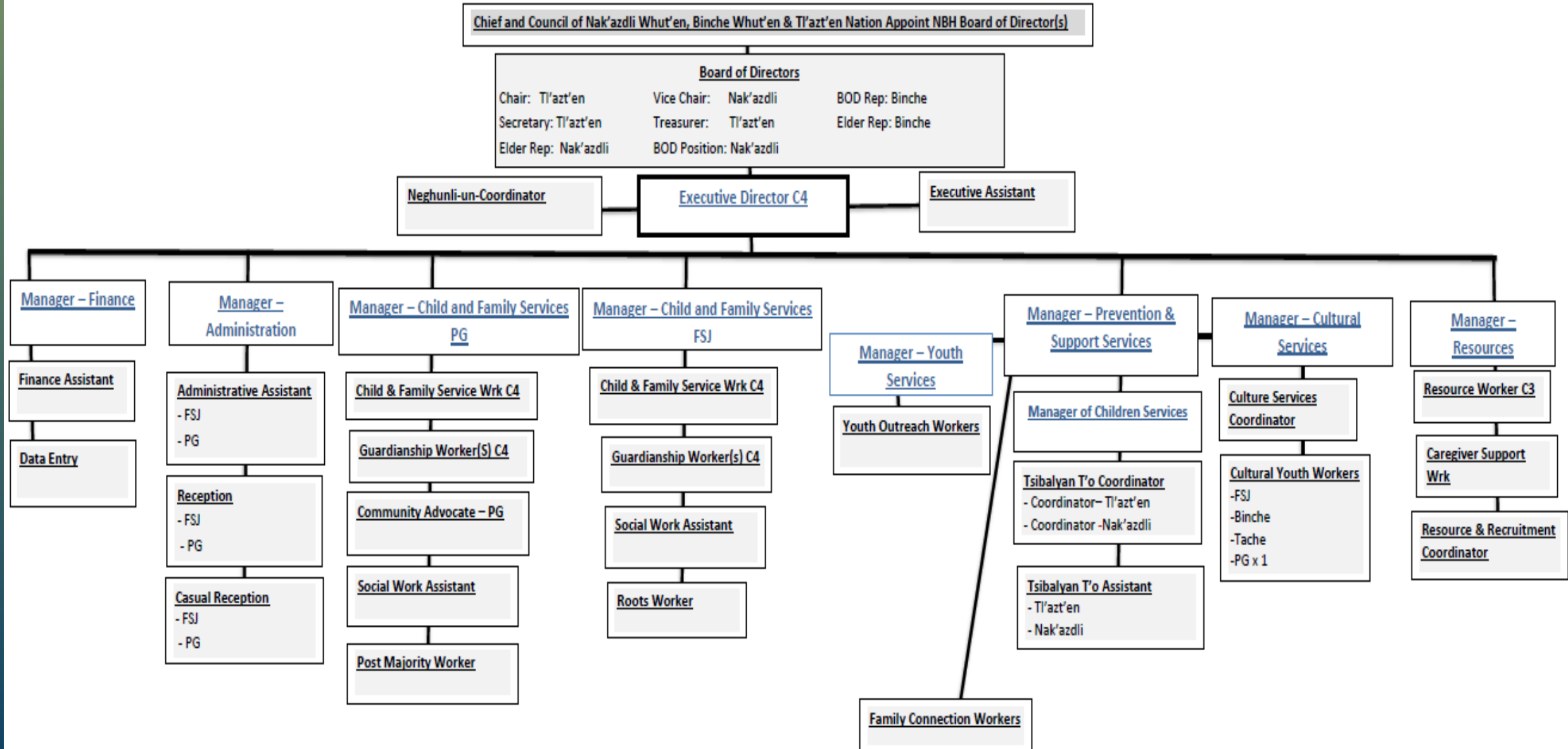
20<sup>th</sup> Anniversary

April 1, 2021 – March 31, 2022

Nedusneke – ne BuK'oh Nuts'oodilh  
"Following the Path of our Ancestors"



# NEZUL BE HUNUYEH CHILD AND FAMILY SERVICES – ORGANIZATIONAL CHART



Nedusneke – ne BuK'oh Nuts'oodilh  
 "Following the Path of our Ancestors"

# BOARD OF DIRECTORS



**Ruby Prince**

*Board of Director Chair  
Tl'azt'en Nation Lusilyoo  
Appointed: July 10, 2017*



**Renada Walstrom**

*Board of Director Vice Chair  
Nak'azdli Whut'en Lusilyoo  
Appointed: February 6, 2019*



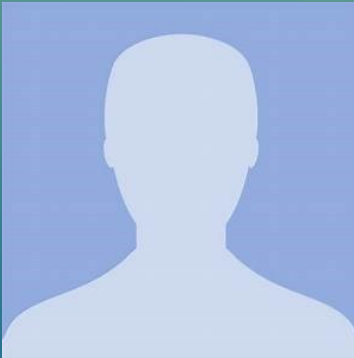
**Genevieve Pierre**

*Board of Director Treasurer &  
Elder Representative  
Tl'azt'en Nation Lhts'umusyoo  
Appointed: June 14, 2019*



**Russell Haskell**

*Board of Director  
Binche Whut'en Kwun Ba Whut'en  
Appointed: August 5, 2021*



**Georgina Thomas**

*Board of Director  
Nak'azdli Whut'en Lusilyoo  
Appointed: June 14, 2021*



**Michelle Pierre**

*Board of Director Secretary  
Tl'azt'en Nation Lhts'umusyoo  
Appointed: June 14, 2019*



**Beverly Prince**

*Board of Director Elder Representative  
Nak'azdli Whut'en Lhts'umusyoo  
Appointed: October 27, 2011*



**Lucille Duncan**

*Board of Director Elder Representative  
Binche Whut'en Lohjuboo Clan  
Appointed: August 5, 2021*

# MESSAGE – BOARD OF DIRECTOR CHAIR



**Ruby Prince**

Welcome everyone to Nezul Be Hunuyeh – Annual General Assembly representing the communities of Nak'azdli Whut'en, Tl'azt'en Nation and Binche Whut'en.

I would like to introduce myself as the Board Chair. I am Lusilyoo (Frog Clan) from and appointed to the board by Tl'azt'en Nation. I, own and operate my own business with my husband, I have a background in Teaching, Counselling, Life Skills Coaching and Deliver Wellness and Prevention Services.

As we move into 2023, I continue to send Prayers and hold up families that have lost loved ones through the years of this pandemic and continued losses. As an organization we will continue to be there to provide support.

At this time, I would like to acknowledge the changes that were made this year, with the switchover of Executive Director.

We welcome Cindy Ghostkeeper as our new Executive Director. She comes with years of experience working in child protection (child welfare) and holds a Bachelor degree in Social Work. Welcome Cindy to the organization.

With that, I would like to acknowledge the transition of Michelle Chase into the role of Roots Worker and thank her for her 18 years of leadership in setting foundations through her dedication in bringing the



# MESSAGE – BOARD OF DIRECTORS, CONT.

organization to the place that it is today. Although still working within the organization, Michelle has created a legacy of building the organization into what it is today, following the guidance of the Board and membership. Thank You Michelle!

Our board currently meets every 2nd month in person, to support the continued work of the organization. Our goal is to continue discussions with membership and communities to create the implementation of an organization that will plan for C6 delegation and meet the current and future needs of our communities and families.

With the transitions we will revisit the strategic planning of (2018) and update the plan this spring of 2023.

We will continue to support and encourage talks with the communities on Bill C92. We welcome any suggestions or recommendations from the membership and communities.

To our hard-working and dedicated staff, thank you for your continuous support to our members. Thank you for your creativity and passion that you continually display through your work.

Please feel welcome to visit our offices anytime to inquire about services, ask questions and give input. The working team and the Board of Directors value our community members and are always open to assisting.

Ruby Prince  
NBH Board Chair

# MESSAGE – EXECUTIVE DIRECTOR



Michelle Chase, BSW

Welcome to our 20<sup>th</sup> Annual General Assembly. Our theme this year is Every Child Belongs in keeping with the planning document that was developed twenty years ago. We are committed to ensuring every child from the communities we serve, no matter where they reside, know that they are not forgotten, that they are important, and that they matter. Reflected in the agency name is the acknowledgement of the bond between children, their families, and their community. The name also is a reminder that nurturing and maintaining these relationships is a sacred responsibility.

I have had the privilege of serving the people of Tl'azt'en, Nak'azdli, and Binche since 2004 when I began as a supervisor of the Child and Family Service Team. At that time, we had a staff of five and were working out of a three - bedroom house on the same property where the office currently sits. In 2006, I was hired as the Executive Director in and have for the past 16 years been working in that role. Over the years I have watched the Agency and staff grow. We now have 50 employees, and we provide a continuum of delegated and prevention services from five locations. We are looking forward to the opening of a youth services center at Nak'azdli to accommodate our growing staff and youth services. Future include continued expansion of programs and services in all three communities.

Over the years, I have worked with many dedicated Board and staff members and each one of you has contributed to where the organization is today. I have also had the privilege of getting to know many Elders and community members over the years and without them, we would not be here.

Nedusneke – ne BuK'oh Nuts'oodilh  
"Following the Path of our Ancestors"

# MESSAGE – EXECUTIVE DIRECTOR, CONT.

My passion has always been ensuring that every child from the communities we serve know who they are and where they come from. For many years, this work has been conducted off the corner of my desk. I now have the opportunity to dedicate my time to this very important work as a Roots practitioner.

I am pleased to introduce Cindy Ghostkeeper, who is a former employee of the Agency, as my successor. I am confident Cindy will continue to follow the road map that was set out in the beginning – to create an Agency that would better serve children and families.

My heart is full of memories of the last eighteen years, those who have left us, the challenges, struggles, and successes that have been realized. Over the years, I have witnessed positive transformation in the child welfare system. Today I am full of hope that Nations will have the responsibility of caring for their own, that they obtain full jurisdiction, and that no child will have to leave their community.

Please join me in welcoming Cindy to the team.



Nedusneke – ne BuK'oh Nuts'oodilh  
"Following the Path of our Ancestors"

# NEZUL BE HUNUYEH VISION

Our vision is that family systems will be restored based on cultural beliefs. We envision our community as a place where our people will be nurtured and guided by the traditional teachings of our elders. Our people will be empowered to carry forward the cultural practices of caring into the future. We are following the path of our ancestors.





# NEZUL BE HUNUYEH VALUES

## ► As defined by Our Elders and Our Traditions

- Children are sacred
- Families will be recognized and acknowledged as First Nations with a diverse and unique history, culture, communities, and familial relationships
- We recognize that we serve three distinct nations: Tl'azt'en Nation, Binche Whut'en, and Nak'azdli Whut'en
- Cultural identity must be protected, promoted, and practiced
- The community's voice must be heard and considered
- The community shares the responsibility of caring for children through traditional practices
- We believe that children belong in their communities therefore we will build capacity with our members to meet their needs
- We have an inherent right to make decisions regarding our children, our families, and our communities



# NEZUL BE HUNUYEH MANDATE

► **We work in collaboration with the family and community to ensure:**

- Children are protected from harm
- To advocate for systemic change
- To plan, develop and deliver programs and services to meet the needs of the communities
- To promote supportive family and community environments for children and youth
- To provide family support through assessment, referral and intervention
- To provide guardianship care to children based on our Values
- To provide information and programs designed to promote child safety and wellness
- To empower Tl'azt'en, Binche, and Nak'azdli families
- To ensure that each Nak'azdli, Binche, and Tl'azt'en child will know who they are and where they come from



# ADMINISTRATION & FINANCE



**Joleen Beninati**  
Receptionist FSJ  
Maliseet from the Wabanaki  
Territory



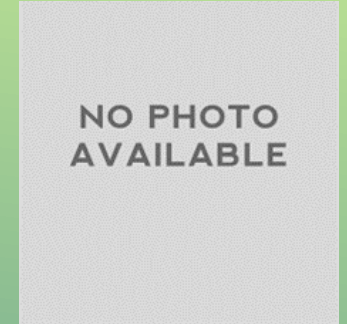
**Erica Bolton**  
Receptionist PG  
Nak'azdli Whut'en, Lusilyoo

The Administration and Finance Team has grown alongside growth of the Agency.

The increase in staffing and programming has resulted in additional support required in these areas.



**Monica Brittain**  
Administration Manager



**Melanie Ubleis, CPA, CGA**  
Finance Manager



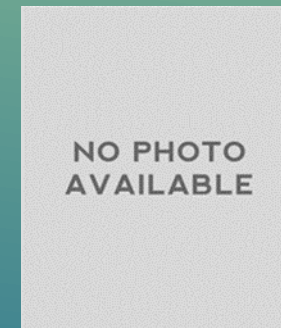
**Victoria Jenkins**  
Administrative Assistant PG



**Maureen Isadore**  
Administrative Assistant FSJ



**Luisa Simms**  
Executive Assistant



**Angie Dhaliwal**  
Finance Assistant



**Abigail Moss**  
Data Entry Clerk

# CULTURE PROGRAM

**NEZUL BE HUNUYEH WOULD LIKE TO ACKNOWLEDGE THE FOLLOWING PEOPLE FOR THEIR HARD WORK AND DETERMINATION FOR THE 2021-2022 YEAR. THE CULTURE PROGRAM WAS EXPANDED THROUGHOUT THIS TIME, A LOT OF WORK WENT INTO CULTURAL PROGRAM DEVELOPMENT.**

**Jolene Prince – Cultural Coordinator**  
**Anastasia Sam – Cultural Youth Worker**  
**Tia Prince – Cultural Youth Worker**  
**Josh Prince – Cultural Youth Worker**  
**Dennis Cumberland – Cultural Youth Worker**

This team had to be creative in delivering programming. At this time COVID rules and regulations always stopped in-person sessions. They managed to keep programs running and offer Cultural Teachings regardless of the obstacles they faced.

Mussi Cho

The Culture Team attended many Community Events for the three member nations. Some events attended include Orange Shirt Day activities, Honouring the Children of Residential Schools, Pink Shirt Day events, Drum Making, Medicine Wheel teachings in community, elementary and secondary school events, and the Spooky-Nuss Event.

Many events during the period of this report were cancelled due to COVID. During this time, online programming was developed in addition to in-person sessions limited to less than four people per session. This was a challenging time as we are a people who like to gather, eat food, laugh, and visit with one another. With programming returning to normal, there has been an increase in knowledge keeper, Elder, and community attendance as well as program offerings. It is an exciting time. We look forward to see where the program, staff, and communities takes us.



# CULTURE PROGRAM, CONT.

## Spring

- Started seedlings for a garden
- Made Spruce pitch salves
- Made Devil's Club salve
- Drum painting
- Photo shoot for MMIWM
- Ribbon skirt making
- Making Indian ice cream
- Drum making
- Jam making
- Spring break Cultural Activities

## Winter

- Making Christmas Wreathes
- Setting night lines for fish
- Preparing and processing fish caught
- Snowshoeing
- Setting rabbit snares
- Trapping demonstrations
- Devil's Club prep for medicine
- Beading
- Sewing

## Summer

- Drum making
- Traditional Introduction teaching
- Picking soap berries
- Medicine Wheel Teaching
- Wood burning
- Beading Sessions
- Picking huckleberries
- Ranch visits
- Family tree teaching
- Genealogy
- Making/Teacher about dreamcatchers

## Fall

- Picking Ludi musjek
- Sweat Lodge sessions
- Making soap berry gummies
- Making jewelry with Devil's club beads
- Making devil's club lotion
- Making vision boards
- Learning to dry moose meat

**Cultural Activity Participants April 1, 2021 – March 31- 2022**

	Nak'azdli	Tl'azt'en Nation	Binche
Elders	6	2	1
Families	19	7	1
Children/Youth	31	10	3

Nedusneke – ne BuK'oh Nuts'oodilh  
"Following the Path of our Ancestors"

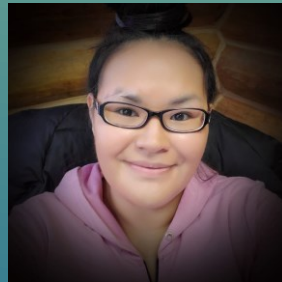
# CULTURE PROGRAM



**Rachel Robert**  
Culture Manager  
Tl'azt'en Nation, Lusilyoo



**Anastasia Sam**  
Cultural Youth Worker  
Nak'azdli Whut'en, Lusilyoo



**Chasity Aslin**  
Cultural Youth Worker  
Tl'azt'en Nation, Lhts'umusyoo



**Casandra Thomas**  
Cultural Youth Worker  
Nak'azdli Whut'en, Lusilyoo

MEET THE CURRENT CULTURE TEAM!

Currently the Culture Team consists of four full-time employees. Cultural Programming is different for each community as the needs for each Community are different. Knowledge is shared by elders and knowledge keepers from all communities, everyone has something different to teach, all of which is important.



**Nezul Be Hunuyeh Culture House**

**732 Stuart Dr. West, Fort St James, BC**

**Phone: 250-996-8336**

Nedusneke – ne BuK'oh Nuts'oodilh  
"Following the Path of our Ancestors"

# CULTURE PROGRAM, CONT.

## Smokehouse Kids

Runs weekly - one night a week for girls, one night a week for boys

## Teens Leading Our Way

Runs weekly - one night a week for girls, one night a week for boys

## Woman's Group

Runs every Thursday - food and transportation provided for each session. All program delivery is at the new Culture house in FSJ, open to everyone.

Drumming and singing taught in many of the sessions.



**The Culture Program is very thankful for the support, guidance and involvement of Elders, knowledge keepers, community members and mentors. With everyone involved we can provide a large range of Cultural Teachings. We would like to give a special shout out to our community members for always being involved.**

**Snachailya**



# PREVENTION & SUPPORT SERVICES



**Todd Morrow, BA, BEd**  
**Manager of Support &**  
**Prevention Services:**

With a background in education, specializing in administration, Todd has been with Nezul Be Hunuyeh since July of 2022.

His passion is working with youth to help them find positive outlets that promote personal growth.

## Support and Prevention Services

The Support and Prevention team provide non-delegated services to Tl'azt'en, Binche, and Nak'azdli families, with the overall goal of promoting wellness and reducing the risk of child protection concerns. The Support and Prevention team is comprised of two branches: The Children Service Team and Youth Outreach team. These branches work both individually and together to provide holistic, family-based programs and services for children, youth, families, and communities.



Nedusneke – ne BuK'oh Nuts'oodilh  
"Following the Path of our Ancestors"



# PREVENTION & SUPPORT SERVICES, CONT.

Family Connection Workers work out of both our Fort St. James and Prince George locations. These positions are responsible for transporting children and families and for providing supervision for family visits. These transportations and visits are on a referral basis from Nezul Be Hunuyeh Guardianship and Child and Family Service workers. FCW's are responsible for collaborating with parents, caregivers, social workers, and children in care to ensure that each visit is a positive experience. In addition to providing transportation and supervision, FCWs assist with life skills work and participate in NBHCFS events and programs as needed.



# PREVENTION & SUPPORT SERVICES, CONT.



**Kristi Howell**  
Manager of Children Services  
Nak'azdli Whut'en, Lujuboo



## The Children Service Team:

The Children Service Team is responsible for administering Early Years programing to three member communities of Nezul Be Hunuyeh. This Team works closely with community to develop and deliver community-based programs to promote family strength, dignity, and unity and comprised of the Tsibalyan T'o (Eagles Nest) team. Tsibalyan T'o is geared to children 0-5 years old and their parents. Parents and children are invited to enjoy toys, games, arts, and crafts.

Themes include holistic approaches to child development, playing with your child, nutrition, hygiene, culture, crafts, and facilitation of language skills and development.

Nedusneke – ne BuK'oh Nuts'oodilh  
"Following the Path of our Ancestors"

# PREVENTION & SUPPORT SERVICES, CONT.



**Jillian Julian**  
Tsibalyan T'o Coordinator, Nak'azdli  
Nak'azdli Whut'en, Lusilyoo



**Charnel Quinn**  
Tsibalyan T'o Coordinator, Tl'azt'en  
Tl'azt'en Nation, Lhts'umusyoo

Number of Families Served April 1, 2021 – March 31- 2022	
Tsibalyan T'o Program Tache	Tsibalyan T'o Program Nak'azdli
29	32

Number of Event Recipients Served April 1, 2021 – March 31- 2022	
Tsibalyan T'o Program Tache	Tsibalyan T'o Program Nak'azdli
63	65

During the fiscal period of April 1, 2021 - March 31, 2022, Tsibalyan T'o was functioning within COVID restrictions.

The Tsibalyan T'o staff researched, created, and distributed packages containing parenting materials, board books, including crafts and activities.

# PREVENTION & SUPPORT SERVICES, CONT.



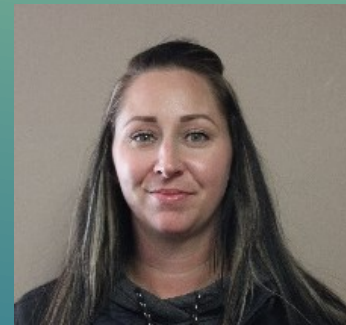
**Clementine Thomas**  
**Manager of Youth Services**  
Nak'azdli Whut'en, Lusilyoo

## The Youth Service Team:

The Youth Service Team interact with youth from three member communities, both one-on-one and in larger groups increasing engagement, providing services, and facilitating growth.

The Youth Outreach Workers (YOW) are responsible for delivering programs, activities, and mentorship in the creation of youth clubs, in accordance with NBHCFS's vision and mission statement.

The Youth Service Team provides a range of outreach services to individuals, families, and groups to enhance or maintain youth functioning in the community. YOW's are responsible for prevention, early intervention, program development, and community outreach with youth and their families. The primary responsibility is engagement with youth and the community through guidance, mentoring, recreational activities, education, and outreach.



**Rachel Larose**  
**Youth Outreach Worker**



**Leanna Barfoot**  
**Youth Outreach Worker**  
Tse'khene, Lhts'umusyoo



# PREVENTION & SUPPORT SERVICES, CONT.

Manager: Maria Willick

Youth Workers: Katrina Siewert  
Nekita Paradis  
Ashley Perry

During the period of April 1, 2021, to October of 2021, the Youth Outreach team was comprised of Youth Outreach Workers as well as the Shun Huznuta program.

Youth Outreach Worker Activity Children Served 2021-2022					
Month	Nak'azdli	Tl'azt'en	Binche	Other	Total
April	3	10	-	2	15
May	4	9	-	1	14
June	4	11	-	7	22
July	4	10	-	3	17
August	-	-	-	17	17
September	4	14	-	1	19
October	4	9	-	4	17
November	6	10	-	-	16
December	2	7	-	1	10
January	2	4	-	1	7

Youth Outreach Worker Activity Families Served 2021-2022					
Month	Nak'azdli	Tl'azt'en	Binche	Other	Total
April	4	10	-	1	15
May	3	13	-	-	16
June	7	14	-	1	22
July	4	11	-	1	16
August	5	10	-	1	16
September	4	14	-	1	19
October	5	9	-	3	17
November	7	10	-	-	17
December	2	8	-	-	10
January	2	5	-	-	7

# PREVENTION & SUPPORT SERVICES, CONT.

## Shun Huznuta

This program provided youth who were transitioning to the adult world with wrap around services to navigate the journey in a safe, secure, and supported way. Shun Huznuta translates to “Finding their song,” and was submitted by Genevieve Pierre.

The program was open to youth between the ages of 16-24. A youth support team supports and guides the youth to develop and implement an individual service plan that identifies their goals.

This program closed on December 15, 2021

Manager: Maria Willick

Youth Mentors: Victoria Jenkins      Nolan Sagalon  
Corrina Woodley      Elisabeth Cyr  
Corline A'Huille      Ludwick Omjec  
Roxanne Woodley      Edna Cameron  
Aida Ribon-Lebrun  
McKenzie Holdis

Shun Huznuta Number of Youth / Families Served 2021-2022					
Month	Nak'azdli	Tl'azt'en	Binche	Other	Total
April	-	4	-	-	4
May	-	5	-	-	5
June	-	3	-	-	3
July	-	3	-	-	3
August	-	3	-	-	3
September	-	-	-	-	-
October	-	3	-	-	3
November	-	-	-	-	-
December	-	-	-	-	-

# CHILD & FAMILY SERVICE TEAM



**Patrice Moonie, BSW**  
Guardianship Worker PG



**Rachel Klassen, BSW**  
Guardianship Worker FSJ



**Danielle Rasmussen, BSW**  
Manager Child & Family  
Services-FSJ



**Ursula Ho Lem, BSW**  
Guardianship Worker FSJ  
Nadleh Whut'en, Lusilyoo



**Sharon Prince, BSW**  
Child & Family  
Services Worker PG



**Stevie Anatole, BSW**  
Manager Child & Family Services FSJ  
Binche Whut'en, Lusilyoo



**Sandra Morton, BSW**  
Guardianship Worker PG



**Michelle Morris, BSW**  
Manager Child & Family  
Services-PG



**Dallas Sam, BSW**  
Child & Family Services  
Worker PG  
Nak'azdli Whut'en, Lusilyoo



**Terry Eastman**  
Community Advocate PG  
Binche Whut'en, Lusilyoo



**Brenda Hannula, BSW**  
Post Majority Service  
Worker PG

# CHILD & FAMILY SERVICES – FAMILY SERVICE

## Family Services (FS)

Voluntary Support for families who become involved with MCFD or families seeking support. A Family Service Worker can assist in:

- The development & implementation of child safety plans
- Assist & advocate for families in communications with MCFD
- Attend mediations and family court to provide support & information
- Make referrals to community & professional services

Family Service Workers **cannot** prevent MCFD from responding to a report, conducting investigations or removing children from the home.

Family Service Intakes by Office Location April 1, 2021 – March 31- 2022	
Prince George	107
Fort St. James	51
Total Intakes	<u>158</u>



# CHILD & FAMILY SERVICES – COMMUNITY ADVOCATE

Nezul Be Hunuyeh (NBH) workers in Prince George attend court matters alongside community members who are receiving services. Updates are provided to the Nation after court proceedings. For ongoing matters, the nation is consulted in advance of the court matters and the NBH Community Advocate can pass along the views/wishes of the Nation during court proceedings.

In Prince George, the Community Advocate or a duty worker, attend all matters involving MCFD as a legal advocate. Updates are provided to the nation and the views of the nation are sought in order to implement supports and services.

In Fort St James, the Community Advocate role is contracted through the nations.



**Terry Eastman**  
Community Advocate Prince George

# CHILD & FAMILY SERVICES – COMMUNITY ADVOCATE

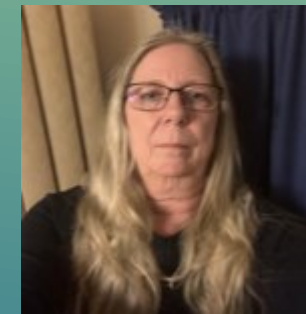
Community Advocates provide service to children, youth and families residing in the communities of Tl'azt'en and Nak'azdli. The Community Advocate provides support, information, and advocacy to families involved with the Ministry of Children and Family Development. The position is intended to reduce the anxiety, confusion, and fear associated with the involvement of child welfare authorities.



**Michelle Pierre**  
Community Advocate – Tl'azt'en

Month	Number of Families Served Tl'azt'en
April	138
May	33
June	33
July	30
August	29
September	80
October	59
November	30
December	30
January	25
February	N/A
March	N/A
Total	487

Month	Number of Families Served Nak'azdli
April	14
May	17
June	25
July	19
August	31
September	29
October	14
November	26
December	N/A
January	N/A
February	N/A
March	N/A
Total	175



**Cindy Soderstrom**  
Community Advocate – Nak'azdli



# PRINCE GEORGE SUPPORT TO COMMUNITY MEMBERS

The Prince George Nezul Be Hunuyeh team offers various outreach and support initiatives throughout the year. Emergency support is available to Tl'azt'en Nation, Binche Whut'en, and Nak'azdli Whut'en members accessing services with the Prince George office. Bus tickets, snack bags, cold weather supplies, and hygiene products are available.

Approximately 420 support bags were provided to community members last year. Other supports and services are offered to community members who access the office for emergency supports and supplies. Referrals to other community organizations are often made.

During the cold snap, three space heaters were purchased. There are often (this year included) many emergent requests from youth and families with no heat in their homes.

A space heater was provided this year under such circumstances.



# CHILD & FAMILY SERVICES – GUARDIANSHIP

NBH has Guardianship responsibilities for children in care under a Continuing Custody Order.

- The order is issued by the court and remains in effect until a child turns 19 years of age or leaves care through adoption, transfer of custody, or family reunification
- Children come into care through removal by an MCFD worker who has been delegated by the Provincial Director of Child Welfare
- NBH **does not** have the delegated authority to remove children
- NBH recognizes the sacred responsibility of caring for children and ensure children and youth from the communities we serve maintain connections to their families, communities, and culture

Number of Children in Care & YAG					
April 1, 2021 – March 31, 2022					
	PG	PG YAG	FSJ	FSJ YAG	Total
Tl'azt'en	30	0	16	2	46
Nak'azdli	5	1	2	3	7
Binche	2	0	2	0	4
Other	10	0	0	0	10
<b><u>Total CIC &amp; YAG Files</u></b>					<u>73</u>

# CHILD & FAMILY SERVICES – POST MAJORITY

Post majority services are available to young adults between the ages of 19 - 26 who were formerly in the care of the Director as per the CFCSA.

Post Majority services provide program and financial support for basic living costs for young adults participating in life skills programs, educational programs, vocational training, or residential treatment programs.

During the pandemic, services that were made available to young adults leaving care were extended, then made permanent.

This has allowed for a more meaningful, gradual, and supported transition for youth to adulthood ages 19-21.

Young adults are supported through outreach and support services.

## Post Majority Intakes – Office Location April 1, 2021 – March 31, 2022

Prince George	29
Fort St. James	0
<b><u>Total Intakes</u></b>	<b><u>29</u></b>

## Post Majority Files – Office Location April 1, 2021 – March 31, 2022

Prince George	6
Fort St. James	5
<b><u>Total SP Files</u></b> (AYA/TSA/THA)	<b><u>11</u></b>

# RESOURCES

NO PHOTO  
AVAILABLE

**Courtney Blair, BSW**  
Resources Manager



**Danika Johnstone, BSW**  
Resource Worker PG



**Juliette Atchison, BSW**  
Resource Worker PG



**Maria Willick**  
Resource & Recruitment Worker

Number of Resources	
April 1, 2021 – March 31, 2022	
Prince George	7
Vanderhoof	1
Fort St. James	5
<b><u>Total Homes</u></b>	<b><u>13</u></b>

## Resource Department

The Resource department has spent the past year developing the new Resource team and building relationships with current caregivers who include kinship homes, family care homes, and contracted resources such as group homes. Efforts have been made to build capacity within these homes and to develop plans for reassessment of placement as well as supporting caregivers in bringing children home and connecting them with family.

The Resource department is a newer development for Nezul Be Hunuyeh and the focus has been on capacity building with current resources as well as beginning to look at how to open and support new homes in community in a meaningful way.



# RESOURCES, CONT.



**Lori den Engelsen, RN**  
Caregiver Support Worker

Number of Caregivers Served by CSW April 1, 2021 – March 31, 2022		
Tl'azt'en	Nak'azdli	Binche
4	4	1

The Caregiver Support role is a key part of the Resource Team, providing holistic support to caregivers caring for children from member communities.

The Caregiver Support role has been filled by Lori den Engelsen. This position provides support to families caring for children other than their own. They support families with medical needs such as scheduling appointments and transportation, assessments, school advocacy, food security as well as meetings with MCFD and other community professionals.

# KIN CAREGIVER APPRECIATION 2021

Kin Caregivers are family members who provide care for children when their parents are unable.

Lingering effects of COVID determined NBH was unable to host the Hearts & Dreams event again this year. The Hearts & Dreams event is organized to acknowledge youth coming of age and recognize kin caregivers.

Caregiver Support & Resource Recruitment Workers delivered baskets filled with tea, mugs, fall décor, Halloween items for the children, and more.



# of Thank You deliveries to Kin Caregivers

Tl'azt'en	Nak'azdli
24	19

# APPLE DAY OCTOBER 2021

Nezul Be Hunuyeh has organized Apple Day for students at Nak'al Bun and Eugene Joseph Elementary schools for several years.

Each program participant and student received a bag of apples with a recipe and ingredients to take and make at home.

# of Apple Day pkgs delivered

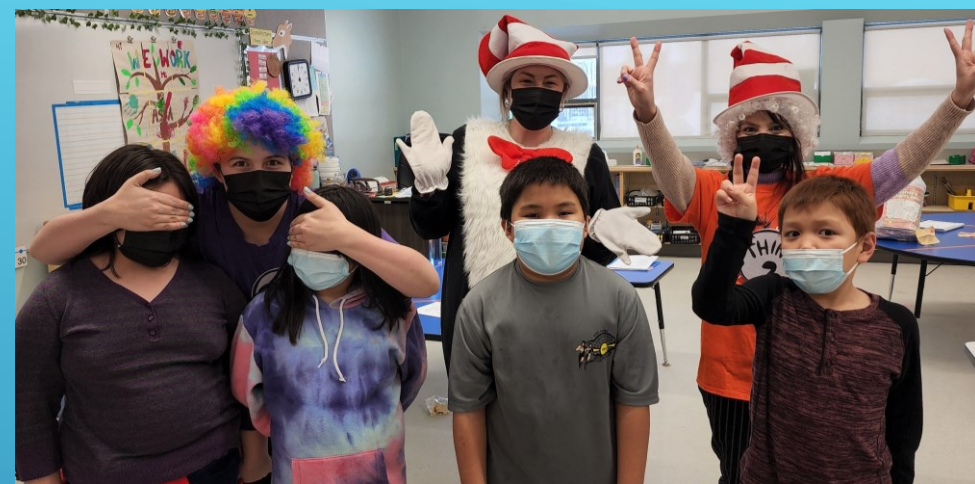
Eugene Joseph Elementary	Nak'al Bun Elementary
41	153

# 2<sup>ND</sup> ANNUAL POLAR EXPRESS

The Nezul Be Hunuyeh Polar Express came to town again for a second year travelling through Nak'azdli Whut'en, Binche Whut'en, and Tl'azt'en Nation. Santa and his elves delivered stockings full of goodies.







# DR. SEUSS DAY MARCH 2022

**# of Reading Packages Delivered**

Eugene Joseph Elementary	Nak'al Bun Elementary
<b>38</b>	<b>155</b>



# NEZUL BE HUNUYEH CONNECTING IN THE COMMUNITIES



Whenever possible, Nezul Be Hunuyeh joins community events to promote health, safety, and engagement. Our staff enjoy connecting with people and we welcome the opportunity to attend and help at any event as well as hosting our own.



# MESSAGE FROM EXECUTIVE DIRECTOR – CINDY GHOSTKEEPER



**Cindy Ghostkeeper, BSW**  
Executive Director  
Driftpile Cree First Nation  
Treaty 8

Tansi/Hadih,

Welcome to Nezul Be Hunuyeh Child & Family Services Society (NBHCFSS) Annual General Assembly and 20<sup>th</sup> Anniversary Celebration. I am honored to be in the role of Executive Director, working along side NBH Board of Directors, Nak'azdli Whut'en, Binche Whut'en and Tl'azt'en Nation. I want to thank the previous Executive Director, Michelle Chase for the work she has done to advance NBHCFSS to where it is today and helping with my transitioning into the role.

For the past six months, I have been getting to know the staff, agency policies and procedures, and communities. The transition back to Nezul Be Hunuyeh has been great! There has been a lot of changes since I was the delegated manager in the Prince George office from 2010-2015. The agency has grown significantly! I was fortunate that I had the opportunity to attend the last NBHCFSS AGA in 2012 where we celebrated our 10<sup>th</sup> Anniversary. I had the honor of celebrating with the late Elder Mary Lebrun, NBHCFSS long-time manager, Don McLelland, and many staff that are working for the agency today.

It is amazing to see the agency finally able to provide prevention and support services. There was a point in time that NBHCFSS had to raise funds for cultural activities even



# MESSAGE FROM EXECUTIVE DIRECTOR – CINDY GHOSTKEEPER CONT.

though it was a requirement and a right of children and youth in care to have cultural connections. Thankfully, in January 2016, Canada was found guilty of discriminating against First Nations Children. This human rights action was brought forward to the Canadian Human Rights Tribunal (CHRT) by the First Nation Caring Society (Cindy Blackstock), the Assembly of First Nations, the Chiefs of Ontario and the Nishnawbe Aski Nation. These services are now funded on an ongoing basis through the Agreement in Principle (AIP) for First Nation Child and Family Services Long Term Reform.

The AIP includes national funding for Prevention, Post Majority services at actual costs up to the age of twenty-six, capital projects, band designate representative on Jordan's Principle, and compensation, totalling \$40 billion. Although the court proceeding was a success and funding was eventually allocated, BC did not receive any prevention funding like the rest of the country until 2018/2019. The agencies have had to play "catch up" with service delivery and due to the pandemic, this has created significant barriers.

I am proud to advise that our amazing staff and managers have been working hard to adapt programming to meet the needs of the communities. Our goal is to ensure all communities have access to services that are specific to their needs and staff, managers are present in community to answer questions, concerns. NBHCFSS's goal is to assist nations with developing capacity with their members to take on the work. More community consultation is needed to ensure we are providing programming that is culturally relevant and



# MESSAGE FROM EXECUTIVE DIRECTOR – CINDY GHOSTKEEPER CONT.

empowering families. NBHCFSS is supportive of those Nations who have indicated a desire to assume authority for their children through Bill C92. The Federal Act reflects a shift from apprehension to a focus on early intervention and prevention. As of January 1, 2020, all existing service providers working with Indigenous children and families must adhere to the minimum standards laid out in the Act which requires a greater amount of accountability to the families and communities we serve.

Our goal is to work with the Nations to build the infrastructure needed to support this transfer of authority which includes a network of care homes in the communities, a full range of prevention services to support families and to establish a team of skilled workers (within NBHCFSS and community) who have their roots planted in Dakelh territory.

As the new fiscal approaches for NBHCFSS (2023-2024), NBHCFSS will continue working with the Nations, in partnership, to ensure that we have the structure needed to support the expansion of services and develop community capacity to take on the work. We will also be consulting with community on what is needed for families if there is a desire to have NBHCFSS delivery child protection services also known as C6 delegation.

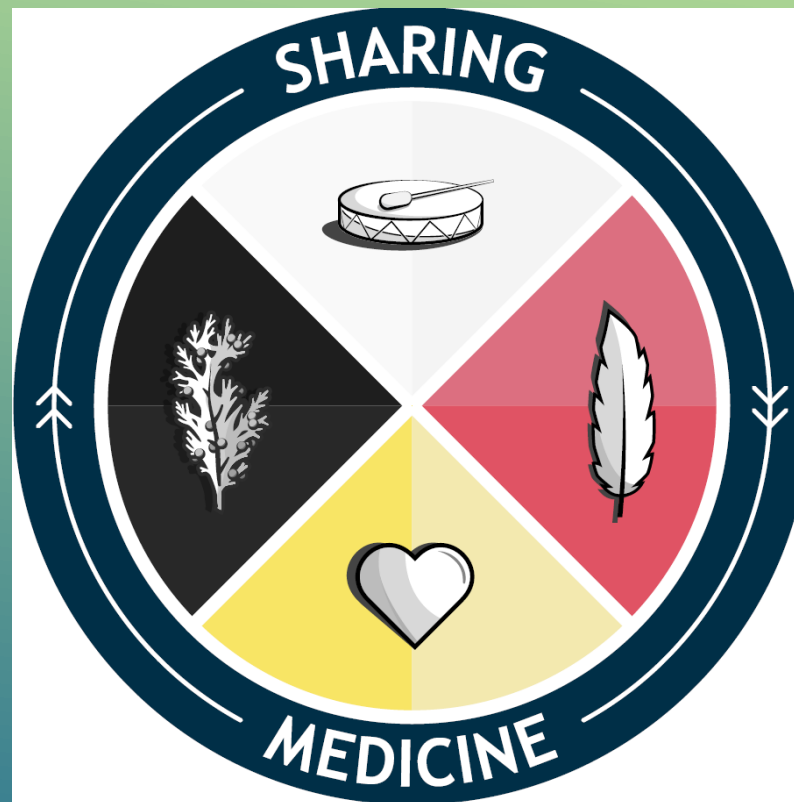
I want to acknowledge all our staff, past and present, for their work to get NBHCFSS where it is today. I would also like to thank the Board of Directors, the membership and communities for their guidance and continued support.



# SAVE THE DATE

## **Culture Camp 2023**

Date tentatively  
scheduled for  
July 16 – 20, 2023  
By Invite Only



## In Recognition

5 Years of Service

Ursula Ho Lem  
Ruby Prince

10 Years of Service  
Beverly Prince

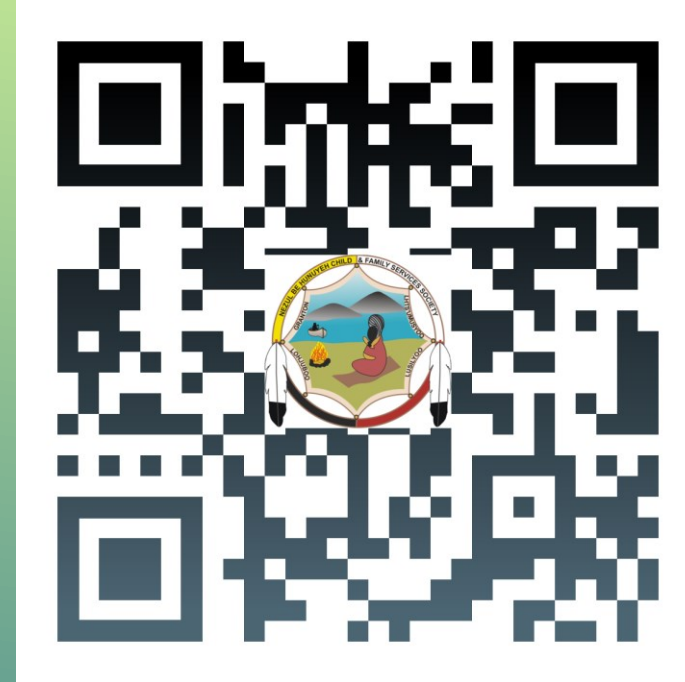
# NOTES



Every year, Nezul Be Hunuyeh develops a logo that represents a message and theme. The logo for 2022 came from the memory of the children who were and are still missing. It represents and displays the idea that

### **Every Child Belongs**

Belongs to the communities, belongs to a clan, belongs to the Earth – The logo represents belonging



CHECK OUT  
NEZUL BE HUNUYEH ONLINE



# Nezul Be Hunuyeh Child & Family Services Society

## MAILING ADDRESS

PO Box 1180 Fort St. James, BC V0J-1P0

## Fort St. James Office

700 Stuart Drive West, Fort St. James

Phone: 250.996.6806 Toll Free: 1.866.996.0015 Fax: 250.996.6977

## Prince George Office

1444—9th Avenue, Prince George

Phone: 250.561.0790 Toll Free: 1.855.562.0790 Fax: 250.561.1590



Nedusneke – ne BuK'oh Nuts'oodilh  
"Following the Path of our Ancestors"